

June

03

Wednesday

2015

Week 23
Day 154-211

MAY	Wk	M	T	W	T	F	S	S	JUN	Wk	M	T	W	T	F	S	S
	18	1	2	3		23	1	2	3	4	5	6	7
	19	4	5	6	7	8	9	10		24	8	9	10	11	12	13	14
	20	11	12	13	14	15	16	17		25	15	16	17	18	19	20	21
	21	18	19	20	21	22	23	24		26	22	23	24	25	26	27	28
	22	25	26	27	28	29	30	31		06	27	29	30

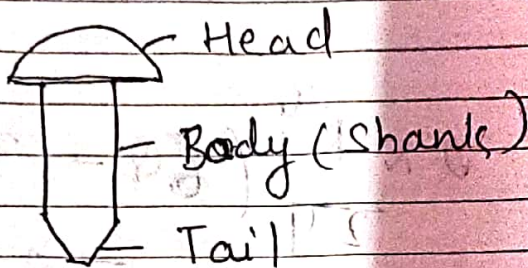
Appointments

9.00 → Riveted connection

→ Types of steel sections → angle, I, Tee, etc.

10.00 → Already Studied → Rivet & its type

Shop Riv. Snap, Pan, counter sunk, etc.



lower driven
Field driven

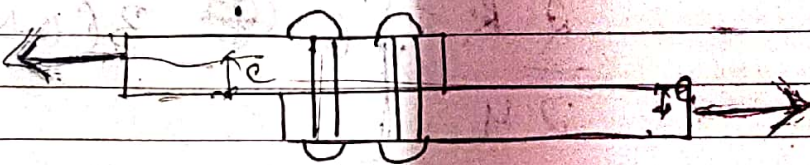
Shop Riv.

3.00 → Types of Riveted Joint

① Lap Joint

② Butt Joint

5.00 Front view



7.00

Top view



Types of Lap Joint

→ Chain riveting

→ zig zag Riveting

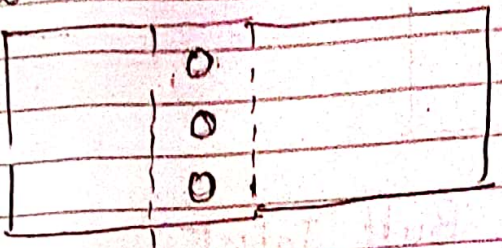
Wk	M	T	W	T	F	S	S	AUG	Wk	M	T	W	T	F	S	S
27	.	.	1	2	3	4	5		31	31	1	2
28	6	7	8	9	10	11	12		32	3	4	5	6	7	8	9
29	13	14	15	16	17	18	19		33	10	11	12	13	14	15	16
30	20	21	22	23	24	25	26	08	34	17	18	19	20	21	22	23
31	27	28	29	30	31	.	.		35	24	25	26	27	28	29	30

Chain Riveting
(a) Single Riveted Lap Joint

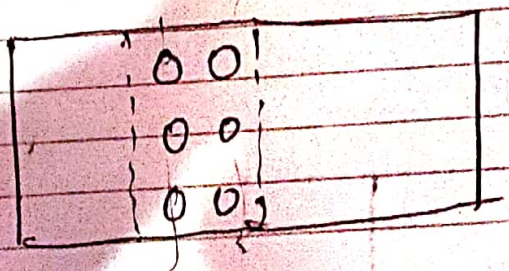
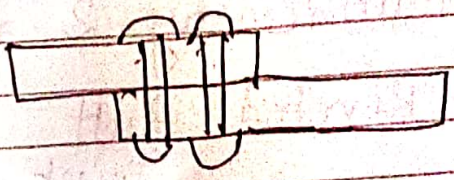
Front view



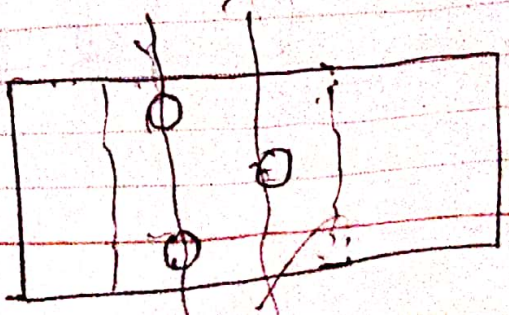
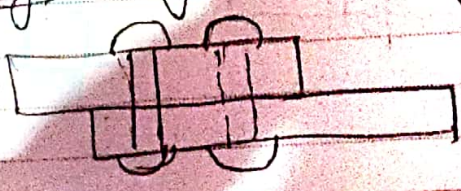
Top view



(b) Double Riveted Lap Joint



(c) Triple Riveted Lap Joint
Zig-zag Riveting

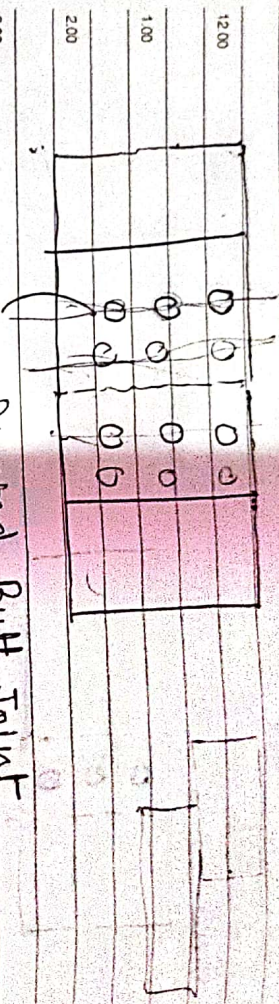


June
05 Friday

2015
Week 23
Day 156-209

MAY	SUN	MON	TUE	WED	THUR	FRI	SAT	JUN	SUN
18	19	20	21	22	23	24	25	26	27
28	29	30	31	1	2	3	4	5	6

Appointments
9:00 Butt Joint → (a) single cover
(b) double plate cover Butt Joint

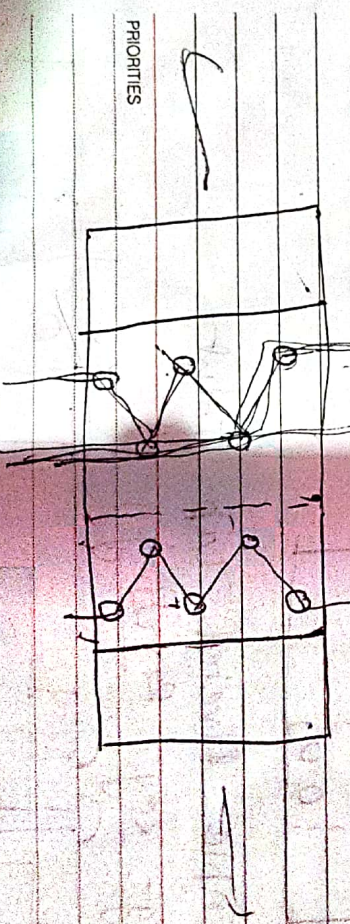


12:00
11:00
10:00
9:00
8:00
7:00
6:00
5:00
4:00
3:00
2:00
1:00

Double Riveted Butt Joint
↳ each main & cover plate 2 rows of rivets

Same as Triple Riveted Butt Joint

Zig Zag Riveting



Wk	M	T	W	T	F	S	S	AUG	Wk	M	T	W	T	F	S	S
27	.	.	1	2	3	4	5		31	31	1	2
28	6	7	8	9	10	11	12		32	3	4	5	6	7	8	9
29	13	14	15	16	17	18	19		33	10	11	12	13	14	15	16
30	20	21	22	23	24	25	26	08	34	17	18	19	20	21	22	23
31	27	28	29	30	31	.	.		35	24	25	26	27	28	29	30

2015
Week 23
Day 157-208

Saturday 06

Most effective Joints between
 Lap Joint & Butt Joint → Double cover butt Joint

